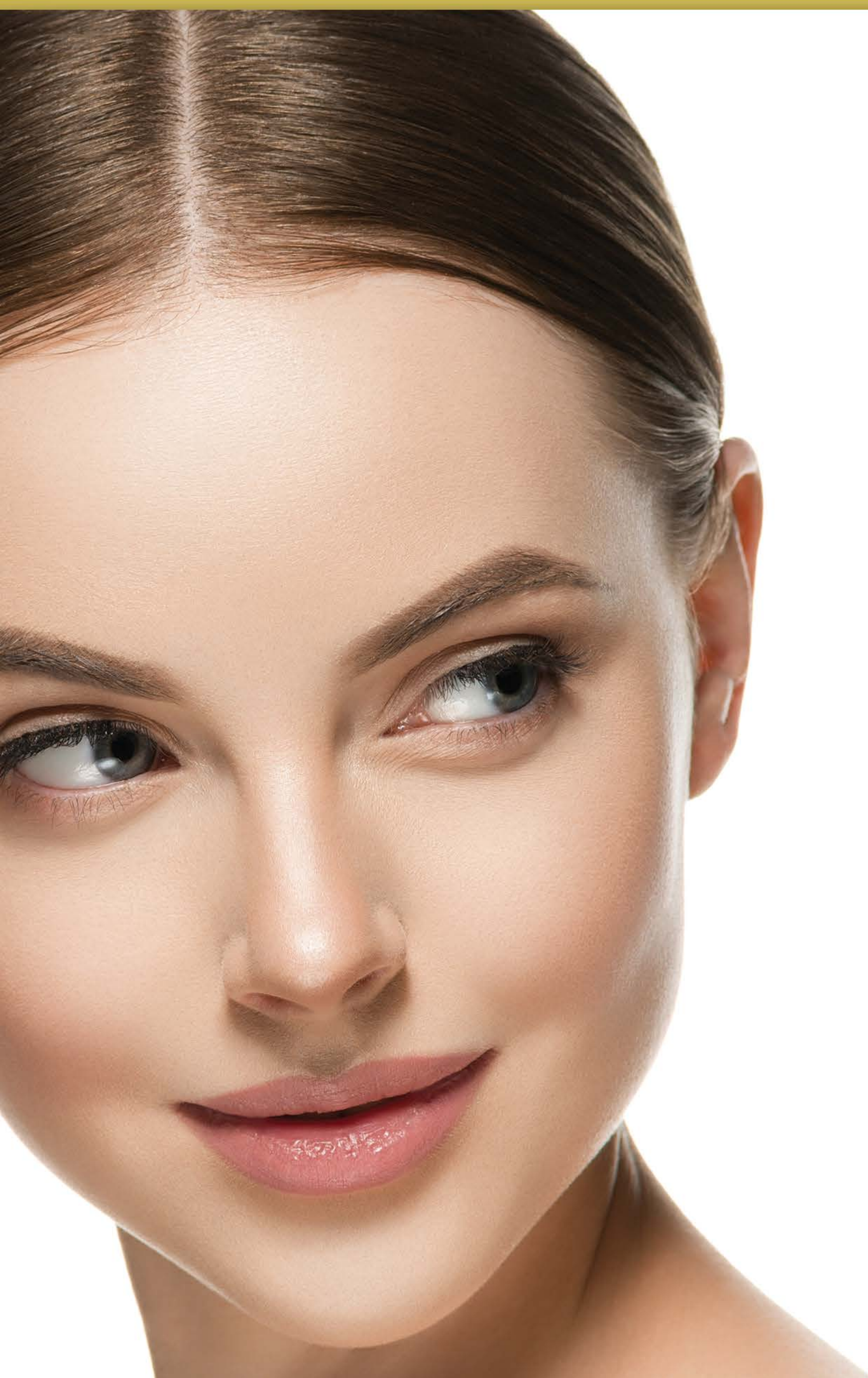




B E L L A G R A C E

# REWARDS PLAN



Bella Grace is one of the first companies to integrate the best of the affiliate marketing model with the social media influencer world. Our innovative social-marketing business model rewards entrepreneurs with 12 different ways to earn money.

For Influencers, we offer long-term residual income without any startup fees or short-term contracts. We believe whenever your followers purchase products from Bella Grace, you should be paid. Regardless of how many people follow you, you can be a Bella Grace Influencer and receive up to 30% in Customer Commissions daily.

We'll provide you with a replicated website, real-time reports, access to world-class training tools and proprietary social marketing tools & content.

---

**WANT TO MAKE MORE MONEY? JOIN US AS AN AMBASSADOR AND UNLOCK OUR FULL REWARDS PLAN FOR JUST \$49.99 A YEAR.**

You'll receive everything Influencers receive plus earn trips to amazing places, receive recognition for your achievements and learn leadership skills.



Take a look at our Rewards Plan and see why we're attracting so many people who are looking for a side gig, a second revenue stream, or a full-time business

**1. SUBSCRIBE & SAVE**

Subscribe & Save is the easiest way to receive products monthly so that you never run out. All you have to do is select a date and we'll make sure your product is delivered to you every month. With Subscribe & Save, you will save 10% off your Subscribe & Save orders and can earn free products. Plus it's flexible, adjust or cancel any time.

**2. U+3=FREE**

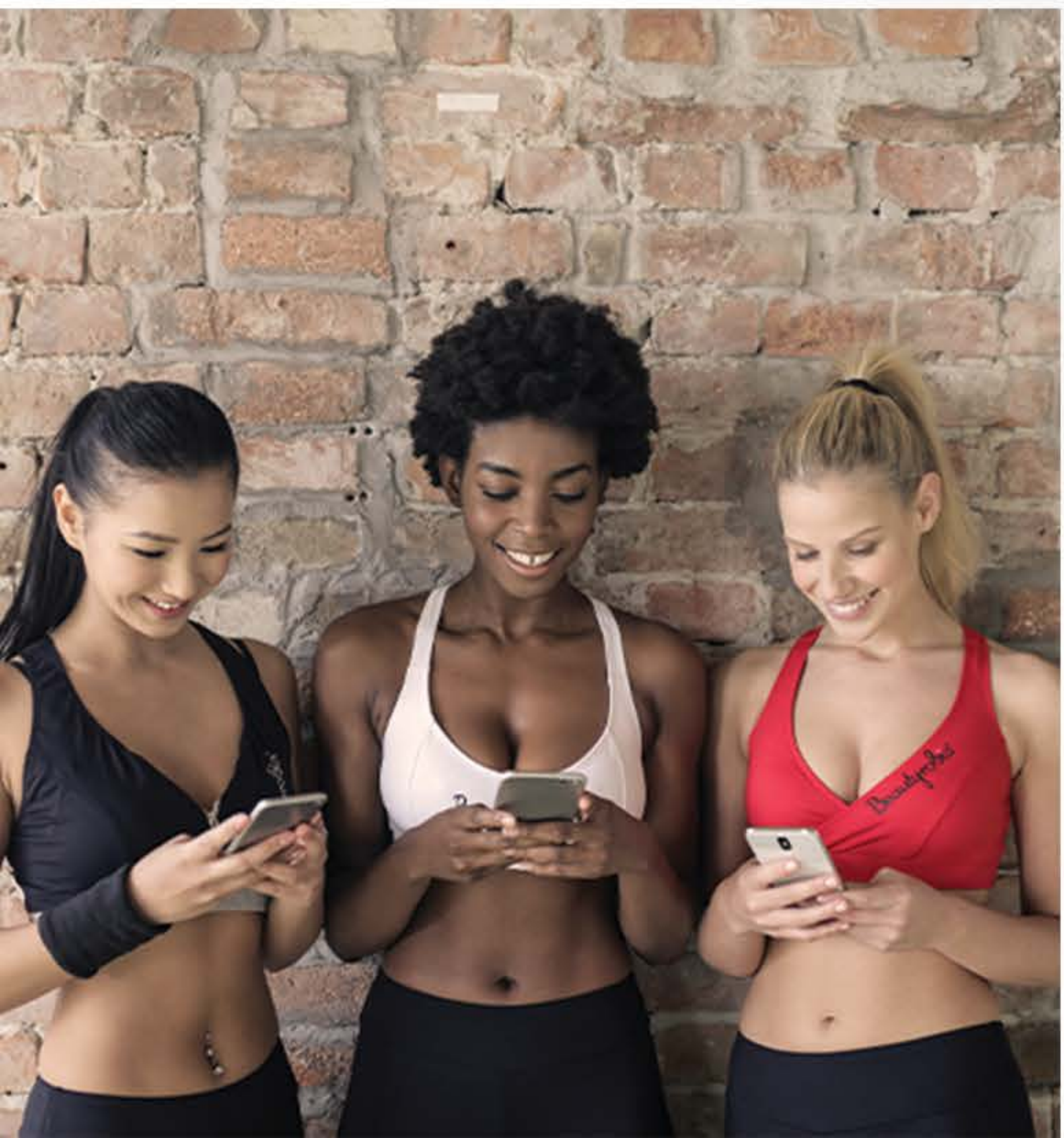
When you have a subscription and have 3 or more personally referred friends (Ambassadors, Influencers or Customers) also on Subscription, your Elixir subscription is free. All you pay for is shipping and tax. This program is available for All Ambassadors, Influencers, and Customers.

**3. INFLUENCER REWARDS PLAN**

Earn daily Customer Commissions up to 30% on every Customer purchase. See more details below in the Customer Commissions section.

**4. AMBASSADOR REWARDS PLAN**

Active Ambassadors can earn daily, weekly, monthly, and quarterly commissions and bonuses.



---

**PAID DAILY**

- Customer Commissions
- Builder Bonus

**PAID WEEKLY**

- Personal Sponsoring Bonus
- 90-Day Sprint Bonus

**PAID MONTHLY**

- Unilevel Team Commissions
- Universal Matching Bonus
- Rank Up Bonus
- Lifestyle Bonus
- Generational Depth Bonus

**PAID QUARTERLY**

- Leadership Bonus Pool
- Diamond Bonus Pool
- Founder's Bonus Pool

When customers purchase products from your Bella Grace website, you will earn up to 30% on every Customer purchase daily. The percentage you earn is based on your previous month's total Customer sales.

The percentage you earn is based on your previous month's total Customers' purchases, both retail orders and Subscribe & Save orders. New Ambassadors and Influencers will earn 10% Customer Commissions on their Customers' purchases the month they enroll. The percentage they earn the following month will be based on their Customers' total purchases during their enrollment month.

Earn up to 30% on Customer sales purchased online for the retail price and up to 20% on Customer Subscribe & Save orders.

Example: In August, if your customers' orders totalled \$530, you will receive 20% on all your retail sales and 15% on Subscribe & Save orders in September.

CUSTOMER SALES	RETAIL ORDERS	SUBSCRIBE & SAVE ORDERS
Up to \$499	10%	10%
\$500 - \$999	20%	15%
\$1,000 +	30%	20%

# PERSONAL SPONSORING BONUS PAID WEEKLY

Earn 10% on your personally sponsored Ambassadors' and Influencers' orders. The 10% is paid on the purchase price. The Personal Sponsoring Bonus is not paid on product packs.

Example: If Tom and Linda purchase an Elixir on Subscribe & Save for \$121.50 and Sheri purchases a Skincare Regimen for \$170, you will receive a Personal Sponsor Bonus of \$41.30.

$$\begin{aligned}
 & \$121.50 + \$121.50 + \$170 = \$413 \\
 & \$413 \times 10\% = \mathbf{\$41.30}
 \end{aligned}$$

NOTE: We expect the typical participant to earn annually between \$0 and \$200 USD in commissions and bonuses, excluding retail profits.

# BUILDER BONUS

## PAID DAILY

---

Active Ambassadors receive a Builder Bonus on every product pack purchased by their personally sponsored Ambassadors and Influencers. The Builder Bonus varies by pack and can change at any time without advanced notice. If the sponsor is not active, the next active Ambassador in the enrollment tree will receive the Builder Bonus. This is called compression.

There is no limit to how many product packs can be purchased by Ambassadors and Influencers and they can be purchased at any time. For Ambassadors, 30% of Product Pack GV will be added to the Unilever Team Commissions.



# 90-DAY SPRINT BONUS

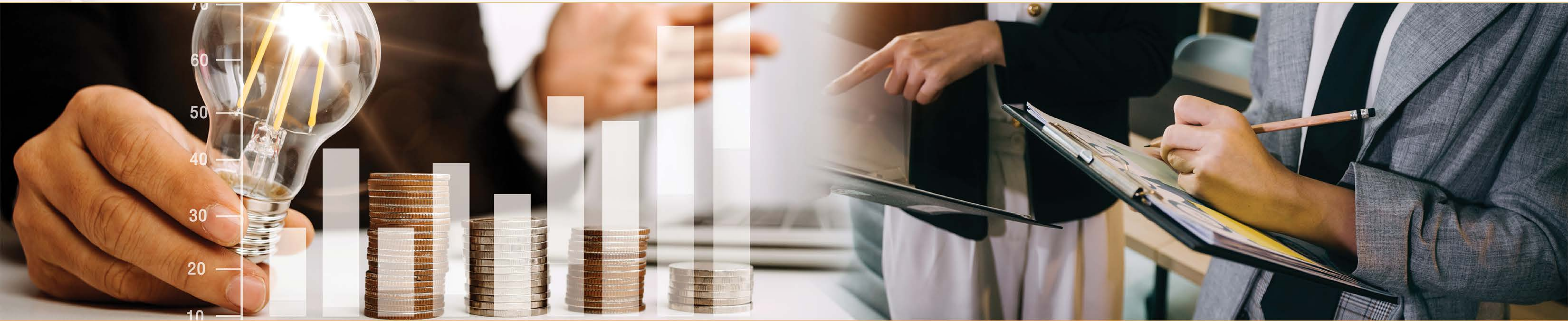
## PAID WEEKLY

The 90-Day Sprint Bonus rewards active Ambassadors for building their businesses as quickly as possible during their first 90 days. New Ambassadors can earn up to \$8,000 in bonuses during their first 90-Days. When the combined GV from your personally sponsored customers, Influencers and Ambassador and the GV from their personally referred or sponsored reach 1,000 GV, you'll earn \$200. Reach the next GV milestone and you'll earn even more! Your personal orders up to 500 GV count.

<b>1,000 GV = \$200 Bonus (\$500 if within 15 days of enrollment)</b>
<b>1,600 GV = \$400 Bonus</b>
<b>2,500 GV = \$600 Bonus</b>
<b>4,000 GV = \$800 Bonus</b>

<b>7,000 GV = \$1,000 Bonus</b>
<b>10,000 GV = \$1,300 Bonus</b>
<b>15,000 GV = \$1,700 Bonus</b>
<b>20,000 GV = \$2,000 Bonus</b>

NOTE: We expect the typical participant to earn annually between \$0 and \$200 USD in commissions and bonuses, excluding retail profits.



To reach each of the GV milestones, only 60% of the GV requirement can come from any one leg. For example, if you enrolled two new Ambassadors, Lisa and Jennifer, the maximum GV that would count from either Lisa or Jennifer is the following:

1,000 GV	Max 600 GV can come from any one leg
1,600 GV	Max 960 GV can come from any one leg
2,500 GV	Max 1,500 GV can come from any one leg
4,000 GV	Max 2,400 GV can come from any one leg
7,000 GV	Max 4,200 GV can come from any one leg
10,000 GV	Max 6,000 GV can come from any one leg
15,000 GV	Max 9,000 GV can come from any one leg
20,000 GV	Max 12,000 GV can come from any one leg

# UNILEVEL TEAM COMMISSIONS

## PAID MONTHLY

Active Ambassadors with the paid-as rank of Silver and above can earn up to 12% Unilevel Team Commissions. The percentage and depth you earn depends on your paid-as rank for that month and the 60/40 rule. The 60/40 rule pays Ambassadors on their strong leg (60%) up to the next rank's 60% max. For example: If you are a paid-as Diamond (100,000 GV total), the maximum you will be paid on your strong leg is on 120,000 GV, which is 60% of Double Diamond, the next rank.

The Unilevel Team Commissions pays on the GV from Customers, Influencers and Ambassadors orders except for product pack purchases. 30% of the GV from product pack purchases are added to the Unilevel Team Commissions.



# UNIVERSAL MATCHING BONUS

## PAID MONTHLY

The Universal Matching Bonus rewards you for building your business and for helping your team have success. When your personally sponsored Ambassadors earn a Builder Bonus or a Unilevel Team Commission, you'll earn a Universal Matching Bonus on whatever they earn up to six levels in your enrollment tree based on your paid-as rank and the 60/40 rule. Same 60/40 rule of the Unilevel Team Commissions applies to the Universal Matching Bonus.

RANK	LVL 1	LVL 2	LVL 3	LVL 4	LVL 5	LVL 6
Platinum	10%	5%				
Sapphire	10%	5%				
Pearl	10%	5%	5%			
Emerald	10%	5%	5%			
Ruby	10%	10%	5%	5%		
Diamond	20%	10%	5%	5%		
Double Diamond	20%	10%	5%	5%	5%	
Triple Diamond	20%	10%	5%	5%	5%	
Crown Diamond	30%	15%	5%	5%	5%	5%
Grace Diamond	30%	15%	5%	5%	5%	5%



# RANK UP BONUS

## PAID MONTHLY

As you begin to achieve the monthly rank requirements, your earning potential increases and takes effect the same month you achieve a new rank. 500 PV per month will count towards your rank qualification following the 60% max leg rule for any rank. For Gold and higher, only 60% of the GV requirement can come from one leg.

The Rank Up Bonus rewards active Ambassadors for achieving and maintaining a new rank beginning with Gold. New Gold through Pearl, will receive a Rank Up Bonus the month they achieve it. Ambassadors who achieve Platinum or Sapphire within the first 30 days of enrollment, will earn a higher Rank Up Bonus. Platinum will earn \$500 and Sapphire \$1,000. Ambassadors who achieve Pearl within 60 days of enrollment will earn a \$2,000 Rank Up Bonus.

Emerald and higher will receive their Rank Up Bonus in equal installments. Each month the new rank is maintained, an installment will be paid until the Bonus has been paid in its entirety for any given rank.

Example: If you achieve Emerald in January, you will receive your first \$500 Rank Up Bonus on January's commission payment. Your next three \$500 amounts will be paid the months you meet the Emerald requirements. If you achieve Emerald in February, April, and May you will receive \$500 each of those months.

The Rank Up Bonus is stackable, meaning January if you're a new Emerald and in February you achieve Ruby, you will receive both Rank Up Bonuses installments every month that you achieve the rank requirements until the bonuses for the corresponding ranks are paid in full.

NOTE: We expect the typical participant to earn annually between \$0 and \$200 USD in commissions and bonuses, excluding retail profits.



Example: In January you're a new Emerald and by the end of February you meet the Ruby requirements. You will receive a \$500 Rank Up Bonus for achieving the Emerald plus a \$625 Rank Up Bonus for achieving Ruby. In total you'll receive \$1,125 in Rank Up Bonuses.

RANK	GV (Placement Tree)	LEG REQUIREMENT (Placement Tree)	RANK UP BONUS	MONTHS PAID
Ambassador				
Bronze	200			
Silver	500			
Gold	1,500	60% leg max	\$100	1
Platinum	2,500	60% leg max	\$150 (\$500 if within 30 days of enrollment)	1
Sapphire	6,000	60% leg max	\$250 (\$1,000 if within 30 days of enrollment)	1
Pearl	12,500	60% leg max	\$500 (\$2,000 if within 60 days of enrollment)	1
Emerald	25,000	60% leg max	\$2,000	4
Ruby	50,000	60% leg max	\$5,000	8
Diamond	100,000	60% leg max	\$10,000	12
Double Diamond	200,000	60% leg max - 1 Diamond leg	\$20,000	16
Triple Diamond	400,000	60% leg max - 2 Diamond legs	\$40,000	20
Crown Diamond	600,000	60% leg max - 3 Diamond legs	\$60,000	24
Grace Diamond	1,200,000	60% leg max - 4 Diamond legs	\$120,000	24

Bella Grace realizes life happens and it's not always possible to achieve your new rank in consecutive months. We do not require that these months be consecutive to receive your full Rank Up Bonus. Each month you achieve your new rank again, you'll be paid the bonus until the full Rank Up Bonus for that rank is paid.

NOTE: We expect the typical participant to earn annually between \$0 and \$200 USD in commissions and bonuses, excluding retail profits.

# LIFESTYLE BONUS

## PAID MONTHLY

---

Leadership is a key component to a thriving business. The Lifestyle Bonus rewards active Ambassadors who achieve the rank Sapphire and above the second month they maintain the new rank. Sapphires receive a \$250 Lifestyle Bonus and continue to receive it each month they maintain their rank. Pearls and above receive an additional \$250, a total of \$500 every month the rank is maintained.

# GENERATIONAL DEPTH BONUS

## PAID MONTHLY

---

The Generational Depth Bonus pays active Double Diamond and above 3% on volume generated from all sales in their enrollment tree up to three Diamond levels.

Your first generation is all of your Ambassadors down to your first Diamond on any given leg. Generation 2 are all the Ambassadors below your first Diamond down to the next Diamond in any given leg.

	Generation 1	Generation 2	Generation 3
Double Diamond	3%		
Triple Diamond	3%	3%	
Crown Diamond	3%	3%	3%
Grace Diamond	3%	3%	3%

# BONUS POOLS

Every sale from Customers, Influencers and Ambassadors contributes to our growth. The Bonus Pools provide a way for active Ambassadors to earn shares of Bella Grace's total sales.

## LEADERSHIP BONUS POOL PAID QUARTERLY

2% of the total global GV in a quarter is put into a Leadership Bonus Pool. Active Emerald through Double Diamond earn shares based on their rank. Shares are earned each month you achieve Emerald through Double Diamond and are paid quarterly. Bonus Shares can be earned for every personally sponsored Sapphire or higher. You must qualify every month in a quarter to participate in the Leadership Bonus Pool

**EXAMPLE:** Julie is an Ambassador who is an Emerald. During the quarter, she advances to Ruby. In the example below, Julie will earn 5 shares plus any Bonus Shares she qualifies for during the quarter.

Month	Rank	Shares Earned
January	Emerald	1
February	Ruby	2
March	Ruby	2

PAID-AS RANK	NUMBER OF SHARES	BONUS SHARES
Emerald	1	+1 for every personally sponsored Sapphire or above
Ruby	2	+1 for every personally sponsored Sapphire or above
Diamond	3	+1 for every personally sponsored Sapphire or above
Double Diamond	4	+1 for every personally sponsored Sapphire or above

To earn the Leadership Bonus Pool, you must qualify every month in a quarter to participate. Points are earned each month based on your paid-as rank.

# DIAMOND BONUS POOL

## PAID QUARTERLY

1% of the total global GV in a quarter is put into a Diamond Bonus Pool. Active Triple Diamond, Crown Diamond and Grace Diamond earn shares based on their rank. Shares are earned each month you achieve Triple Diamond, Crown Diamond and Grace Diamond and are paid quarterly. To earn the Diamond Bonus Pool, you must qualify every month in a quarter to participate. Points are earned each based on your paid-as rank.

Bonus Shares can be earned for every personally sponsored Ruby and Diamond. The number of Bonus Shares rewarded for personally sponsored Diamonds is based on your rank.

PAID-AS RANK	NUMBER OF SHARES	BONUS SHARES
Triple Diamond	1	+1 for every personally sponsored Sapphire or above +2 for every personally sponsored Ruby or above
Crown Diamond	1	+1 for every personally sponsored Sapphire or above +4 for every personally sponsored Ruby or above
Grace Diamond	1	+1 for every personally sponsored Sapphire or above +6 for every personally sponsored Ruby or above

# FOUNDERS BONUS POOL

## PAID QUARTERLY

Become a Bella Grace Founder and earn shares in the company's quarterly success. Each quarter 2% of the global GV is allocated to the Founders Bonus Pool. Active paid-as Sapphires and above can earn shares based on their paid-as rank.

To be eligible to earn shares Ambassadors must purchase a Founders Combo Pack. The Founders Combo Pack is only available through December 31, 2023. After that date Ambassadors will not be eligible to earn shares in the Founders Bonus Pool.

Every month of the quarter to earn shares Ambassadors must achieve the following:

- Purchased a Founders Combo Pack (one-time purchase)
- Be U+3=FREE Qualified
- Achieve paid-as Sapphire or above

PAID-AS RANK	SHARES
Sapphire through Pearl	1 Share
Emerald & Ruby	2 Shares
Diamond & Above	3 Shares

You must qualify every month in a quarter to participate in the Founders Bonus Pool and meet all the requirements for all 3 months of a quarter to earn shares in the Founder's Bonus Pool. Points are earned each month based on your paid-as rank.

**For example:**

MONTH	PAID-AS RANK	SHARES EARNED
October	Emerald	2
November	Pearl	1
December	Emerald	2

**Total shares earned are 5.**

# WHEN ARE COMMISSIONS PAID?

---

**Daily Pay:** A daily period starts each day at 12:00 AM Pacific Time and ends the same day at 11:59 PM Pacific Time. Daily pay commissions are paid the following day after the previous day ends. For example, if a customer makes a purchase on Monday at 11:00 pm PT, commissions will be paid on Tuesday.

**Weekly Period:** A weekly period starts Monday at 12:00 AM Pacific Time and ends Sunday at 11:59 PM Pacific Time. Weekly commissions are paid on Mondays, a week after the period ends.

**Monthly Period:** A monthly period begins on the first calendar day of a month at 12:00 AM Pacific Time and ends the last calendar day of that same month at 11:59 PM Pacific Time. Monthly commissions are paid on or before the 15th of the following month.

**Quarterly Period:** A quarterly period runs 3 full calendar months. The quarters are January through March, April through May, July through September, and October through December. Quarterly bonuses are paid on the next monthly check.



# QUALIFYING FOR COMMISSIONS

## DAILY AND WEEKLY COMMISSIONS

To earn commissions you must meet one of the following:

- Personal order of 60 PV or above
- 120 GV in Customer purchases
- Personally be U+3=FREE Qualified

When you meet one of the requirements above you will be considered active for that commissionable week and are eligible to earn daily and weekly commissions for that month and the following month. Bella Grace’s commissionable week starts Monday at 12:00 AM Pacific Time and ends Sunday at 11:59 PM Pacific Time.

For example: If a customer places an order on March 16th, as long as you are active by March 22nd, you’ll receive daily and weekly commissions for the rest of March and the entire month of April.

If you are not active in April, you will not receive daily and weekly commission in May until you are active. Once you are active in May, you will start earning daily and weekly commissions for that commissionable week plus the rest of May and June.

### MARCH

S	M	T	W	T	F	S
1	2	3	4	5	6	7
8	9	10	11	12	13	14
15	16	17	18	19	20	21
22	23	24	25	26	27	28
29	30	31				

### APRIL

S	M	T	W	T	F	S
			1	2	3	4
5	6	7	8	9	10	11
12	13	14	15	16	17	18
19	20	21	22	23	24	25
26	27	29	30	31		



## MONTHLY COMMISSIONS

To earn monthly commissions you must meet one of the following requirements any time during the calendar month to be considered active for that current month and the following month:

- A minimum of 60 PV
- 120 GV in Customer purchases
- U+3 = FREE Qualified

Tip For Success: Active requirements can be met monthly by maintaining an active subscription of 60 PV or more.

## QUARTERLY COMMISSIONS

### **Leadership Bonus Pool and Diamond Bonus Pool**

To earn the Leadership Bonus Pool and Diamond Bonus Pool you must meet the paid-as rank requirement plus be active every month of the quarter.

### **Founders Bonus Pool**

To be eligible to earn shares in the Founders Bonus Pool Ambassadors must first purchase a Founders Combo Pack. The last time you are able to purchase the Founders Combo Pack is on December 31, 2023.

Each month of the quarter Ambassadors must be paid-as Sapphire or above and be U+3 = FREE Qualified every month of the quarter.

# TERMS & DEFINITIONS

---

**Active:** TAn Ambassador is an independent business owner who completes an Ambassador Agreement, pays \$49.99 yearly and earns income by building a team.

**Compression:** Compression occurs when an Ambassador does not meet the requirements to receive a bonus. The next active Ambassador who does meet the requirements receives the Bonus. Compression is applicable to the Builder Bonus and the Unilevel Team Commissions.

**Customer:** A Customer is a person who purchases products only, and has the ability to refer to other Customers, Ambassadors or Influencers. A Customer can upgrade to an Influencer or Ambassador.

**Enrolling Sponsor:** Your enrolling sponsor is the Ambassador who enrolled you.

**Enrollment Tree:** Your enrollment tree is the people you personally sponsor and the people they sponsor, etc.

**Generation:** A generation is all of the Ambassadors down to your first Diamond in any given leg. That Diamond and all the Ambassadors down to the next Diamond are on your second generation.

**Group Volume (GV):** Refers to the value associated with a product. Your commissions, bonuses, pools, and rank are based on your GV.

**Influencer:** An Influencer is a person who shares Bella Grace and earns commissions on their customer orders. Influencers can earn up to 30% in Customer Commissions. A Customer can upgrade to Influencer for free.

**Level:** The Ambassadors you personally sponsor are on your first level. The Ambassadors they sponsor are on your second level, etc.

**Paid-As Rank:** Your paid-as rank is based on meeting the qualifications for each rank during a monthly commission period. Your paid-as rank may fluctuate month to month based on meeting the rank requirements.

**Personal Volume (PV):** Volume from your personal purchases is called PV.

**Placement Tree:** You can place your personally sponsored Ambassadors or Influencers anywhere within your team. The placed Ambassador or Influencer will be part of the placement tree for both the enroller and the Ambassador who they were placed under.

**U+3 = FREE Qualified:** When you have 3 or more personally referred friends (Ambassadors, Influencers or Customers) purchasing product on subscription, you can earn your Elixir for free when you have a subscription. All you pay for is shipping and tax.